

## INSTALLATION NOTES

# NAVIGATOR

Touch Screen Keypad



Compatible with



**NEC**  
CORPORATION

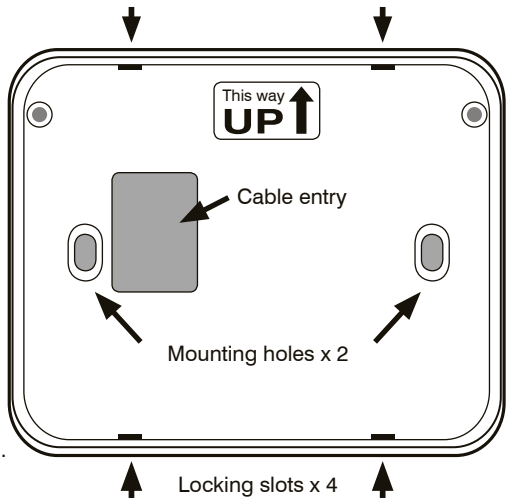
## Installation

To open the Navigator Touch Screen keypad, release the four locking slots with a small screwdriver.

Install the back housing on a flat surface using the two slotted mounting holes provided.

The alignment arrow indicates the correct way up.

Navigator Keypad back housing.



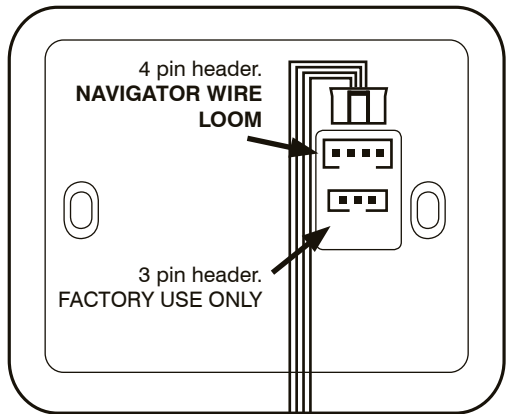
## Wiring

Navigator Touch Screen Keypad should be wired to the control panel using minimum 7/020 security cable.

Up to four Navigator keypads can be connected per control panel as long as the maximum current draw for all detectors and keypads is below 500mA.

Maximum allowable cable distance is 100m including cable to all keypads.

Wire additional keypads in "star" configuration to the control panel.



Navigator Keypad REAR

### D8x / D16x V7 Main Board

	DAT	DAT	Blue
	CLK	CLK	White
	COM	COM	Black
	+12V	+12V	Red

Crimp connectors  
(Supplied)

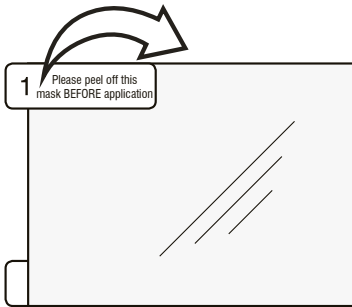
# Applying the Protective Film

Navigator Touch Screen Keypad is supplied with two self-adhesive screen protectors. Please apply one protector and keep the other as a spare.

The Protective Film is supplied to protect the sensitive touch surface from marks and scratches which may appear under normal use. We highly recommend you apply the film to keep your touch screen looking brand new for years to come.

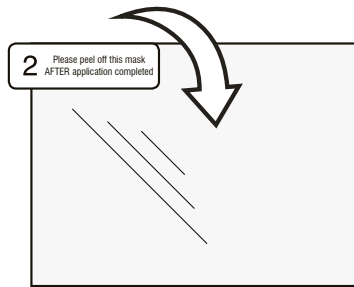
## STEP 1.

Use the Number 1 tab to peel off the self-adhesive backing.



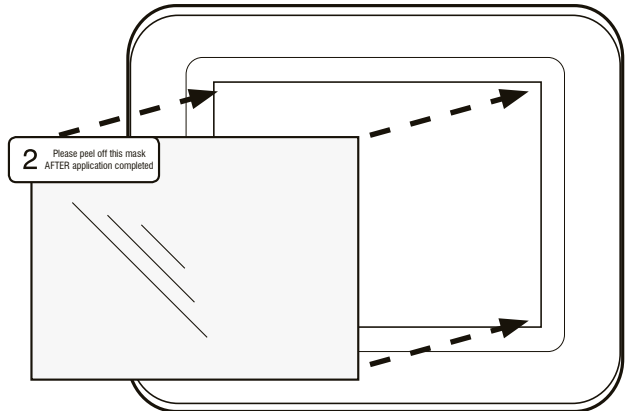
## STEP 2.

Flip the film over to position the No. 2 tab at the top left.



## STEP 3.

Holding the protective film by the No. 2 tab, carefully apply the film to the Navigator's screen. Start applying at one end and smooth the film as you go to remove any air bubbles.



## STEP 4.

Use the No. 2 tab to peel off and discard the topmost layer of the film. Your Navigator is now ready for use.

## Compatibility

Navigator Touch Screen keypad is compatible with Ness D8x and D16x Version 7 and later control panels.

The keypad will display a warning if connected to earlier panel versions.



## Specifications

<b>DIMENSIONS</b>	108w x 86h x 15d mm.
<b>DISPLAY TYPE</b>	3.5" Colour LCD
<b>DISPLAY RESOLUTION</b>	320 x 240
<b>TOUCH SCREEN</b>	Touch sensitive surface
<b>COMPATIBILITY</b>	D8x & D16x control panels version 7 and later
<b>MAX. KEYPADS</b>	4 x Navigator Touch Keypads per panel Maximum current draw for all detectors and keypads should not exceed 500mA.
<b>OPERATING VOLTAGE</b>	12VDC supplied by the control panel
<b>CURRENT DRAW</b>	25mA with 50% backlighting 50mA with 100% backlighting
<b>DATA</b>	2 wire proprietary Ness data bus



Quality  
ISO 9001  
NSW Head Office only



[www.ness.com.au](http://www.ness.com.au)



NAVIGATOR TOUCH SCREEN KEYPAD  
INSTALLATION NOTES  
Rev 1, Apr10

Document Part Number: 890-411